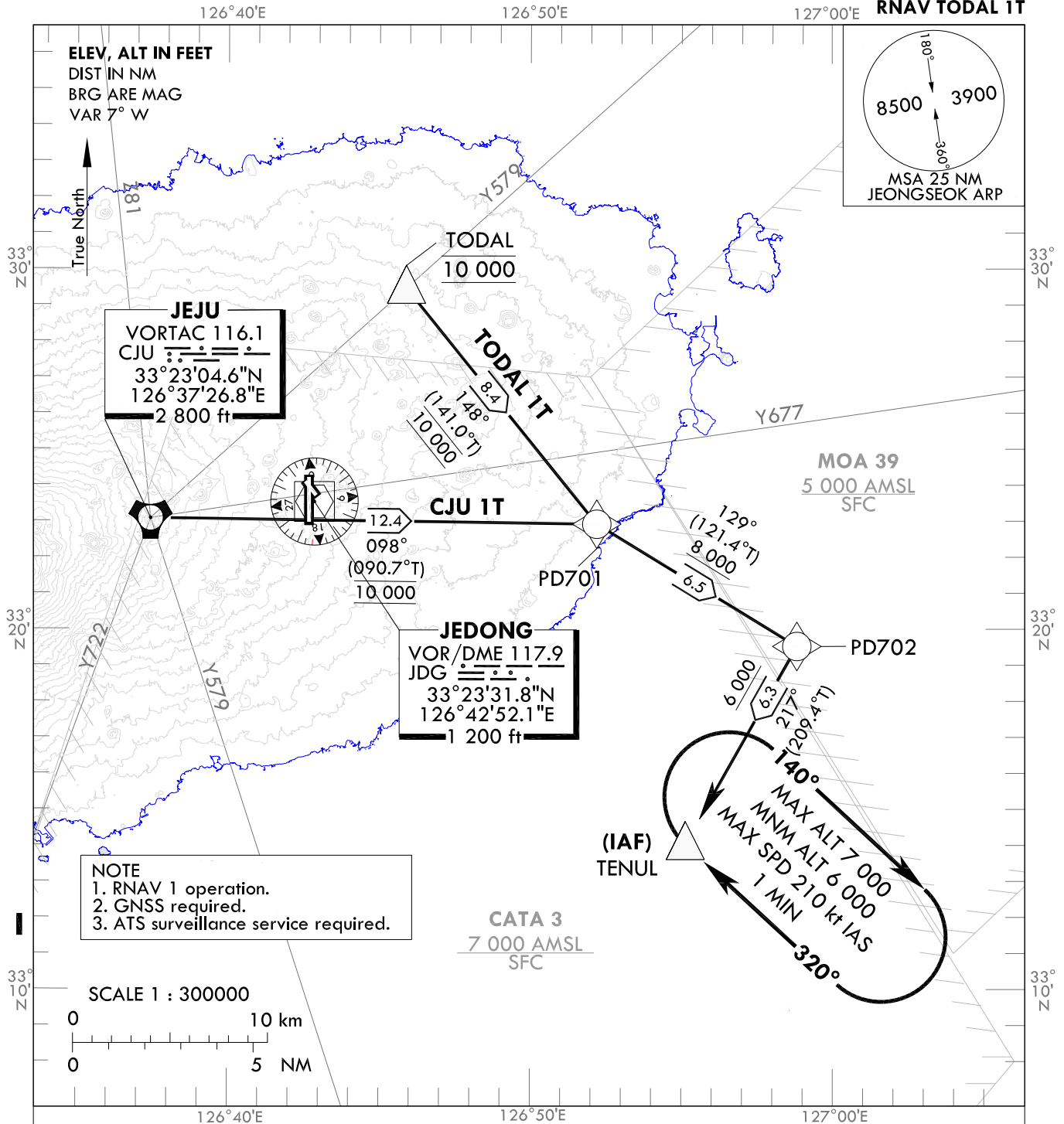


**STANDARD ARRIVAL CHART  
INSTRUMENT (STAR) - ICAO**

TRANSITION ALT 14 000  
TRANSITION LVL FL 140

JEJU APP 121.2  
124.05  
JEONGSEOK TWR 124.35

**JEJU/Jeongseok(RKPD)  
RWY 01  
RNAV CJU 1T  
RNAV TOTAL 1T**



**GENERAL INFORMATION**

1. Within JEJU TMA, maximum 250 kt IAS below 10 000 ft.
2. Maximum holding speed 210 kt IAS at TENUL.

**RNAV JEJU ONE TANGO ARRIVAL : CJU - PD701 - PD702 - TENUL**

**RNAV TOTAL ONE TANGO ARRIVAL : TOTAL - PD701 - PD702 - TENUL**

JEJU/Jeongseok(RKPD)

RWY 01

RNAV CJU 1T, RNAV TODAL 1T

## AERONAUTICAL DATA TABULATION

## Standard Instrument Arrival Procedure Coding Tables

## RNAV CJU 1T

Serial Number	Path Descriptor	Waypoint Identifier	Fly-over	Course/Track °M(°T)	Distance (NM)	Turn direction	Altitude (ft)	Speed (kt)	Coordinates	VPA/ TCH	Navigation specification	Remarks
001	IF	CJU	-	-	-	-	@10 000	-	33°23'04.6"N 126°37'26.8"E	-	RNAV 1	-
002	TF	PD701	-	098(090.7)	12.4	-	@10 000	-	33°22'54.9"N 126°52'12.5"E	-	RNAV 1	-
003	TF	PD702	-	129(121.4)	6.5	-	+8 000	-	33°19'31.4"N 126°58'49.6"E	-	RNAV 1	-
004	TF	TENUL	-	217(209.4)	6.3	-	-7 000 +6 000	-	33°14'01.6"N 126°55'08.7"E	-	RNAV 1	IAF

## RNAV TODAL 1T

Serial Number	Path Descriptor	Waypoint Identifier	Fly-over	Course/Track °M(°T)	Distance (NM)	Turn direction	Altitude (ft)	Speed (kt)	Coordinates	VPA/ TCH	Navigation specification	Remarks
001	IF	TODAL	-	-	-	-	@10 000	-	33°29'27.6"N 126°45'53.9"E	-	RNAV 1	-
002	TF	PD701	-	148(141.0)	8.4	-	@10 000	-	33°22'54.9"N 126°52'12.5"E	-	RNAV 1	-
003	TF	PD702	-	129(121.4)	6.5	-	+8 000	-	33°19'31.4"N 126°58'49.6"E	-	RNAV 1	-
004	TF	TENUL	-	217(209.4)	6.3	-	-7 000 +6 000	-	33°14'01.6"N 126°55'08.7"E	-	RNAV 1	IAF

STANDARD ARRIVAL CHART  
INSTRUMENT (STAR) - ICAO

TRANSITION ALT 14 000  
TRANSITION LVL FL 140

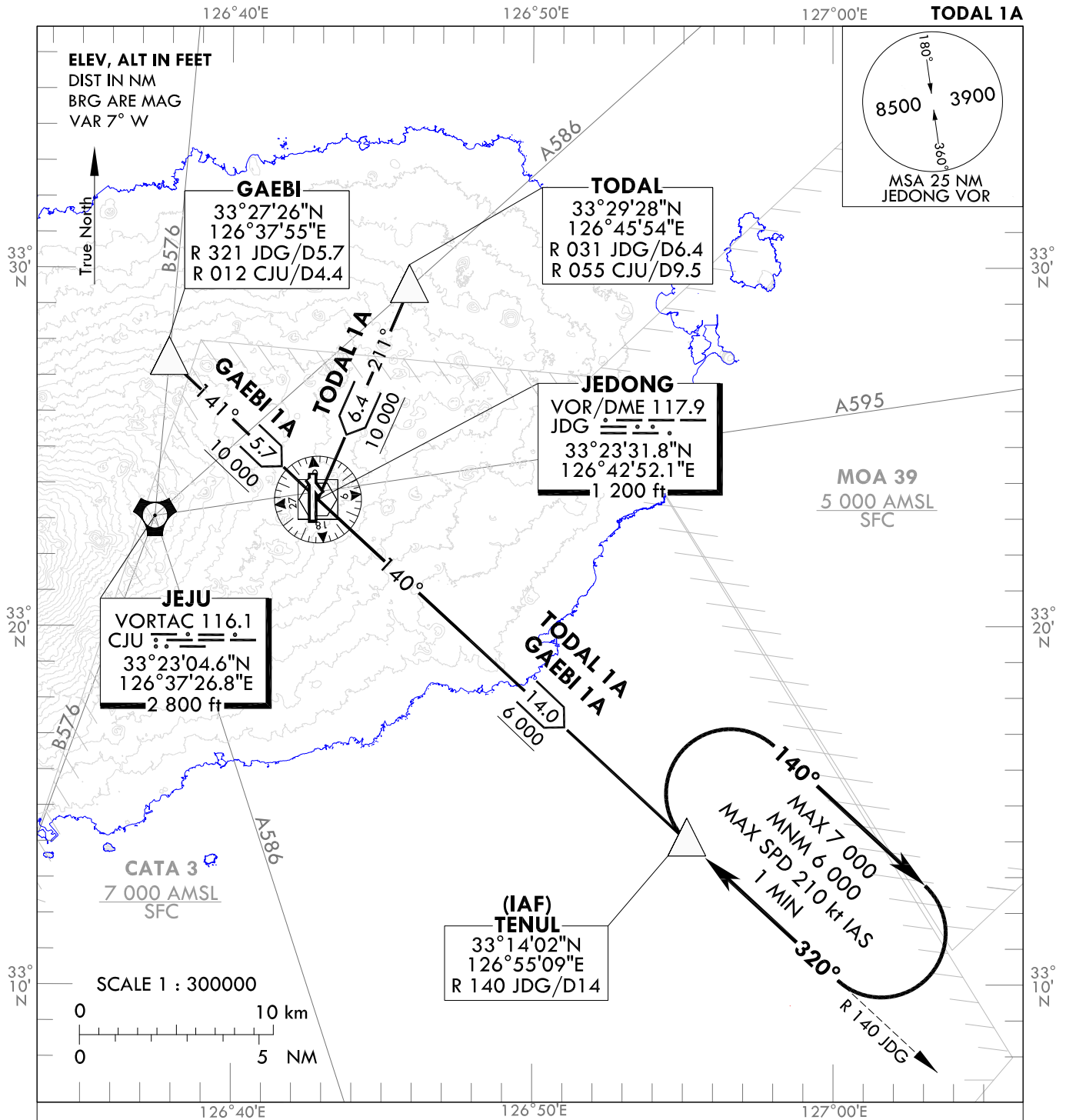
JEJU APP 121.2  
124.05  
JEONGSEOK TWR 124.35

JEJU/Jeongseok(RKPD)

RWY 01

GAEBI 1A

TOTAL 1A



GENERAL INFORMATION

1. Within JEJU TMA, maximum 250 kt IAS below 10 000 ft.
2. Maximum holding speed 210 kt IAS at TENUL.

DESIGNATOR	FROM	ROUTE	DESCENT ALTITUDE
GAEBI ONE ALPHA (GEB 1A)	B576	GAEBI - JDG - TENUL	Cross JDG at 10 000 ft, TENUL at or above 6 000 ft.
TOTAL ONE ALPHA (TDL 1A)	A586	TOTAL - JDG - TENUL	Cross JDG at 10 000 ft, TENUL at or above 6 000 ft.

Change : Information of standard instrument arrival procedure for RWY 01.

**INTENTIONALLY**

**LEFT**

**BLANK**